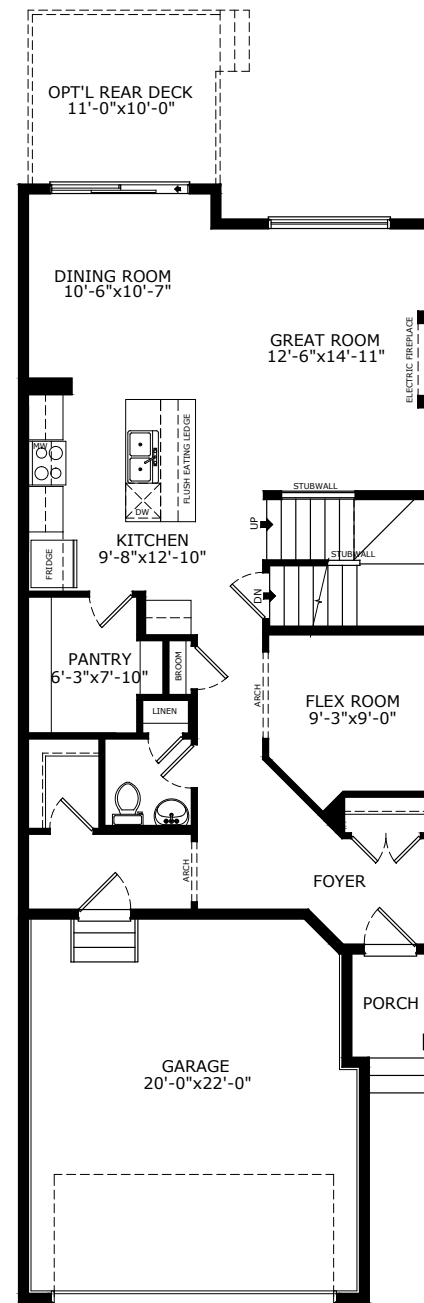
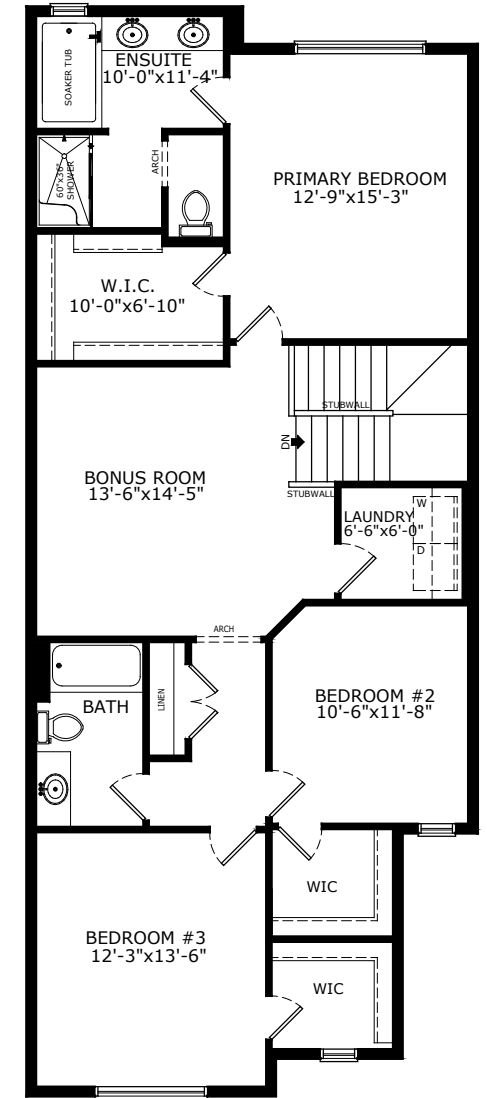


**2228 SQ FT**  
**3 BEDS**  
**2.5 BATHS**

# DENALI 6



**MAIN: 997 SQ FT**



**UPPER: 1231 SQ FT**

# Sterling HOMES

A QUALICO Company

## ELEVATIONS



CONTEMPORARY ARTS & CRAFTS



CONTEMPORARY PRAIRIE



CRAFTSMAN



MODERN

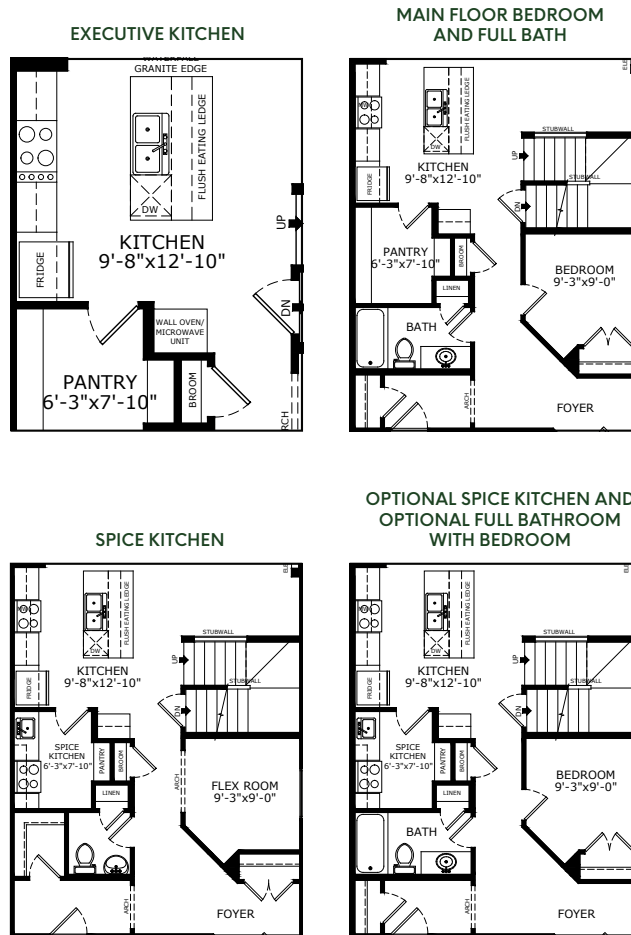


PRAIRIE

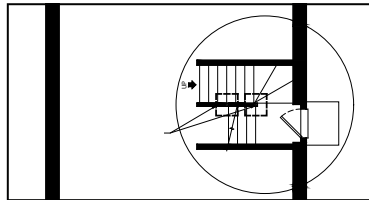


Scan here for floorplan options and more

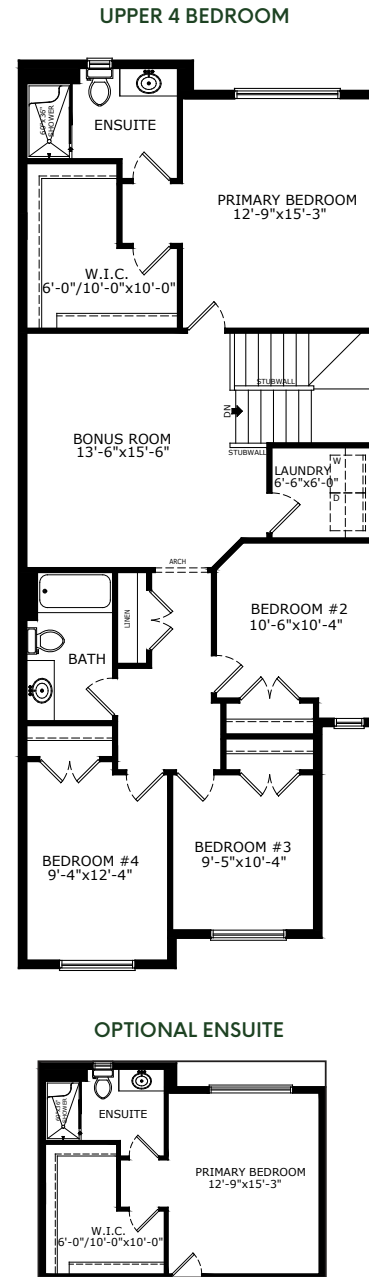
## MAIN FLOOR OPTIONS



### OPTIONAL SIDE ENTRY WITH REVISED BASEMENT STAIRS



## UPPER FLOOR OPTIONS



## BASEMENT OPTIONS



\*Legal Suite availability varies by community and municipal regulations.

# Build Your Life

STERLINGCALGARY.COM